

DynaVox AccessIT[®]

User's Guide



Copyright © 2010 DynaVox Systems LLC

All rights reserved. No part of this book may be reproduced, stored in a retrieval system, or transmitted in any form, by any means (electronic, photocopying, recording, or otherwise) without the prior written permission of the publisher.

Copyright protection claimed includes all forms and matters of copyrightable material and information allowed by statutory or judicial law or hereafter granted, including without limitation, material generated from the software programs which are displayed on the screen such as screen displays, menus, etc.

Although every precaution has been taken in the preparation of this book, the publisher assumes no responsibility for errors or omissions.

For information, write to:

DynaVox Systems LLC

2100 Wharton Street, Suite 400

Pittsburgh, Pennsylvania 15203 USA

The European Authorized Representative is:

DynaVox Technologies Ltd.

High Street Wollaston

West Midlands DY8 4PS

England

DynaVox® is a registered trademark of DynaVox Systems, LLC. DynaVox AccessIT, V, Vmax and Xpress are registered trademarks of DynaVox Systems LLC.

All other brand and product names mentioned are trademarks or registered trademarks of their respective holders.

Part # 401059-A

First Edition

Published March 2010

Created in the United States of America

Introduction

"Bluetooth" is a short-range wireless communication system that allows electronic devices to communicate with each other without the use of cables.

The DynaVox Bluetooth AccessIT ("AccessIT") enables you to use your DynaVox speech device to send key strokes or mouse moves to a Windows computer - without using any wires or cables.

AccessIT works with the following DynaVox devices or computer setups:

DynaVox Device
Xpress
Vmax (see Note:)
V (see Note:)

Computer Configuration
Windows 7
Windows Vista
Windows XP



Note: If you are using AccessIT with a V or Vmax, you will also need the DynaVox V/Vmax Bluetooth Adapter (#501244). Contact your DynaVox sales representative for more information.

The setup couldn't be easier:

- Plug the DynaVox AccessIT into a USB port on your Windows computer
- "Pair" the AccessIT with your DynaVox speech device

That's all! You can now send messages or commands to your computer from your DynaVox speech device!

Following are step-by-step instructions for pairing your DynaVox speech device with the AccessIT.

Hardware Overview

The AccessIT contains two main pieces - the interior USB connector, and the outer casing that rotates around it. When the AccessIT is closed, the USB connector is covered by the outer casing. (See ***Opening the AccessIT*** on the next page.)

Items of interest:

- **Activity LED** – This blue light will blink when the AccessIT is in a "discoverable" state.

It will stay on constantly while the AccessIT has an active connection.

- **Connect Button** – Press this button to put the AccessIT in a "discoverable" state.
- **Viewport** – When the AccessIT is open, this viewport allows you to see the Activity LED.
- **USB Connector** - Plug this into a USB port on your Windows computer.

Closed



Open



Opening the AccessIT

1. Hold the keyring hole on the right, and rotate the left end of the AccessIT to expose the USB connector.
2. Continue rotating until the Activity LED lines up with the round viewport in the outer housing.

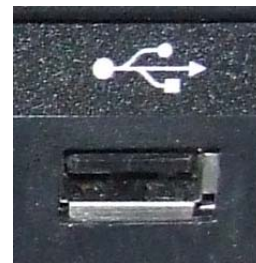


Connecting to a Computer

Plug the USB connector on the AccessIT into a USB port on your Windows computer. You do **not** connect the AccessIT to your DynaVox speech device.



Note: The first time you make this connection, you may see a few automatic updates in the Windows task bar, which may read "New Hardware Found," "Installing device drive software," and "Your device is ready to use." You do not need to take any action.



Pairing the AccessIT to a V/Vmax



Note: You will need to acquire the DynaVox V/Vmax Bluetooth Adapter (#501244) to connect to your V/Vmax device.

On your Windows computer:

1. Make sure that the AccessIT is connected to a USB port on the computer.
2. Press the Connect button on the AccessIT. The Activity LED will begin to blink.

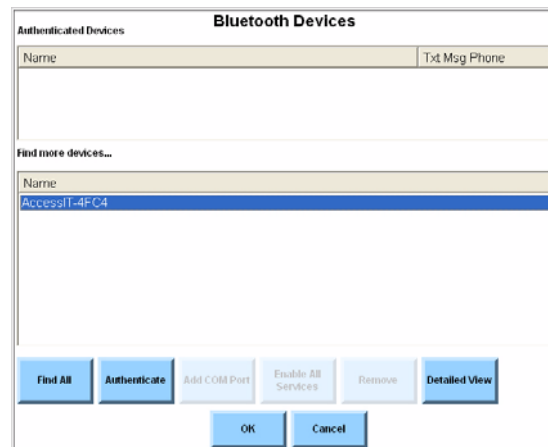
On your V/Vmax device:

3. Connect the Bluetooth adapter to a USB port on your V/Vmax.
4. Select **Main Menu > Setup > Setup Menu**.
5. Select **Input/Output Settings**.
6. Select the **Computer Access** drop-down menu and choose **Bluetooth AccessIT**.
7. Select **Bluetooth Devices**.
8. Select **Find All**. Your V/Vmax will search for Bluetooth-enabled devices in the immediate area. When the search is completed, all discovered devices will appear in the bottom viewport of the *Bluetooth Device* menu.



9. Select the name of the AccessIT in the list, and then select **Authenticate**.
10. A message will appear, indicating that the Bluetooth device has been successfully authenticated. Select **OK** to close this message. The name of the AccessIT will appear in the top viewport of the *Bluetooth Devices* menu.
11. Select **OK** to return to the *Input/Output Settings* menu.
12. Select the **Computer Access** drop-down menu and choose **Bluetooth AccessIT**.
13. Select **OK** to close all open menus.

Your V/Vmax is now enabled to access and control your Windows computer over a Bluetooth connection.



Note: Refer to the V/Vmax Searchable Help (on the device itself or on CD) for detailed information on using Computer Access behaviors to control the computer.

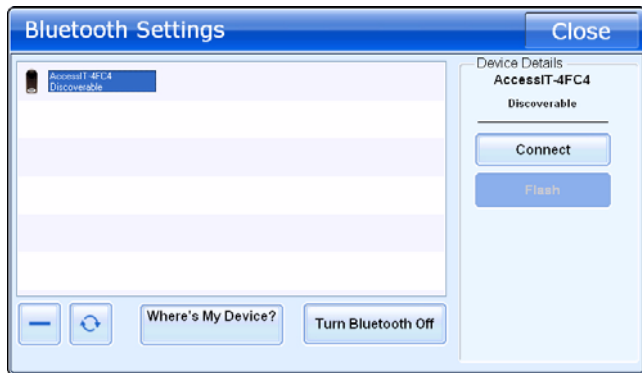
Pairing the AccessIT to an Xpress

On your Windows computer:

1. Make sure that the AccessIT is connected to a USB port on the computer.
2. Press the Connect button on the AccessIT. The Activity LED will begin to blink.

On your Xpress device:

3. Select the Dashboard Tab (or Power button) to open the Dashboard.
4. Select **Setup > Settings > Bluetooth Settings**.
5. If the Bluetooth button says "*Turn Bluetooth On*," select it.
6. Select the icon for the AccessIT in the viewport. If the icon is not visible, select the Refresh button (curved arrows).
7. Select the **Connect** button. "Connected" will appear in the Device Details group box (and next to the icon in the viewport) with a connection is made.
8. Select the **Close** button to close all open menus.



Note: Refer to the *Xpress Design Software Guide* or Xpress Searchable Help (both available on CD) for detailed information on using Computer Access behaviors.

How to Get Additional Help

Online Support (www.dynavoxtech.com)

- Knowledge Base
- Application ideas and page sharing
- Virtual Classroom

Technical Support

United States & Canada

1-866-DYNAVOX (396-2869)

M - F, 8:00 a.m. - 7:00 p.m. (EST)

www.dynavoxtech.com

Your DynaVox Mayer-Johnson Sales

Consultant: 1-888-697-7332

United Kingdom

+44 (0) 1384 446789

enquiries@dynavox.co.uk

If you are not a resident of North America or the United Kingdom, please call the dealer from whom you purchased your device.

FCC Notices

This device complies with FCC 47 CFR Part 15 Subpart B. Operation is subject to the following two conditions:

- (1) This device may not cause harmful interference, and
- (2) This device must accept any interference received, including interference that may cause undesired operation.

The device is also tested to Canadian standard ICES-003.

Changes or modifications to this product which are not authorized by DynaVox Systems could exceed FCC limits and negate your authority to use this product.

This equipment has been tested and found to comply with the limits for a Class B digital device, pursuant to Part 15 of the FCC Rules. These limits are designed to provide reasonable protection against harmful interference in a residential installation. This equipment generates, uses and can radiate radio frequency energy and, if not installed and used in accordance with the instructions, may cause harmful interference to radio communications. However, there is no guarantee that interference will not occur in a particular installation. You can determine whether this product is causing interference in other equipment by turning this product off. If the interference stops, it was probably caused by this product or one of its accessories. You can attempt to correct the interference by using one or more of the following measures:

- Move this product to one side or the other of the other equipment.
- Move this product farther away from the other equipment.



EMC Technical Conformance: The Bluetooth® AccessIT® conforms with the requirements set forth in EN 301 489-3 V1.4.1 with respect to EN 301 489-1 V1.8.1 in accordance with the Radio & Telecommunications Terminal Equipment (R&TTE) Directive - 99/5/EC.

CE ENVIRONMENTAL INFORMATION: Use: 0 - 45° C; Storage: (-20°) - 50° C; 95% maximum relative humidity at ambient temperatures less than 40° C.

The Bluetooth trademarks are owned by Bluetooth SIG, Inc., U.S.A. and licensed to DynaVox Systems LLC.
